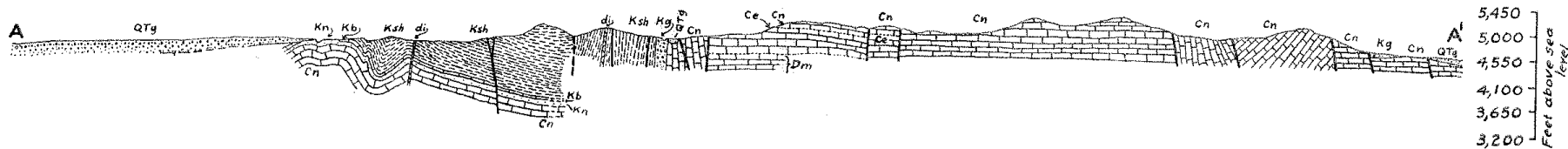
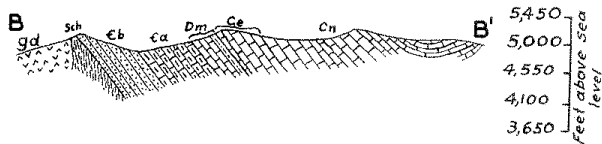


SECTION A-A'



SECTION B-B'



0 1000 2000 feet

- QTg—valley fill gravels
- di—dike
- Ksh—shale, sandstone, and quartzite
- Kb—Blue limestone
- Kn—"Novaculite"
- Kg—conglomerate
- Cn—Naco limestone
- Ce—Escabrosa limestone
- Dm—Martin limestone
- Ea—Abrigo limestone
- Eb—Bolsa quartzite
- sch—schist
- gd—granodiorite

Plate V.—Structure sections along lines A-A' and B-B' of Plate III.