

Geologic Map of the Cocoraque Butte 7.5' Quadrangle, Pima County, Arizona

by
Steven J. Skotnicki and Philip A. Pearthree

October 2000

Arizona Geological Survey Digital Geologic Map 6

Arizona Geological Survey
416 W. Congress, Suite 100, Tucson, AZ 85701

Includes OFR 00-08 in Adobe® PDF format.

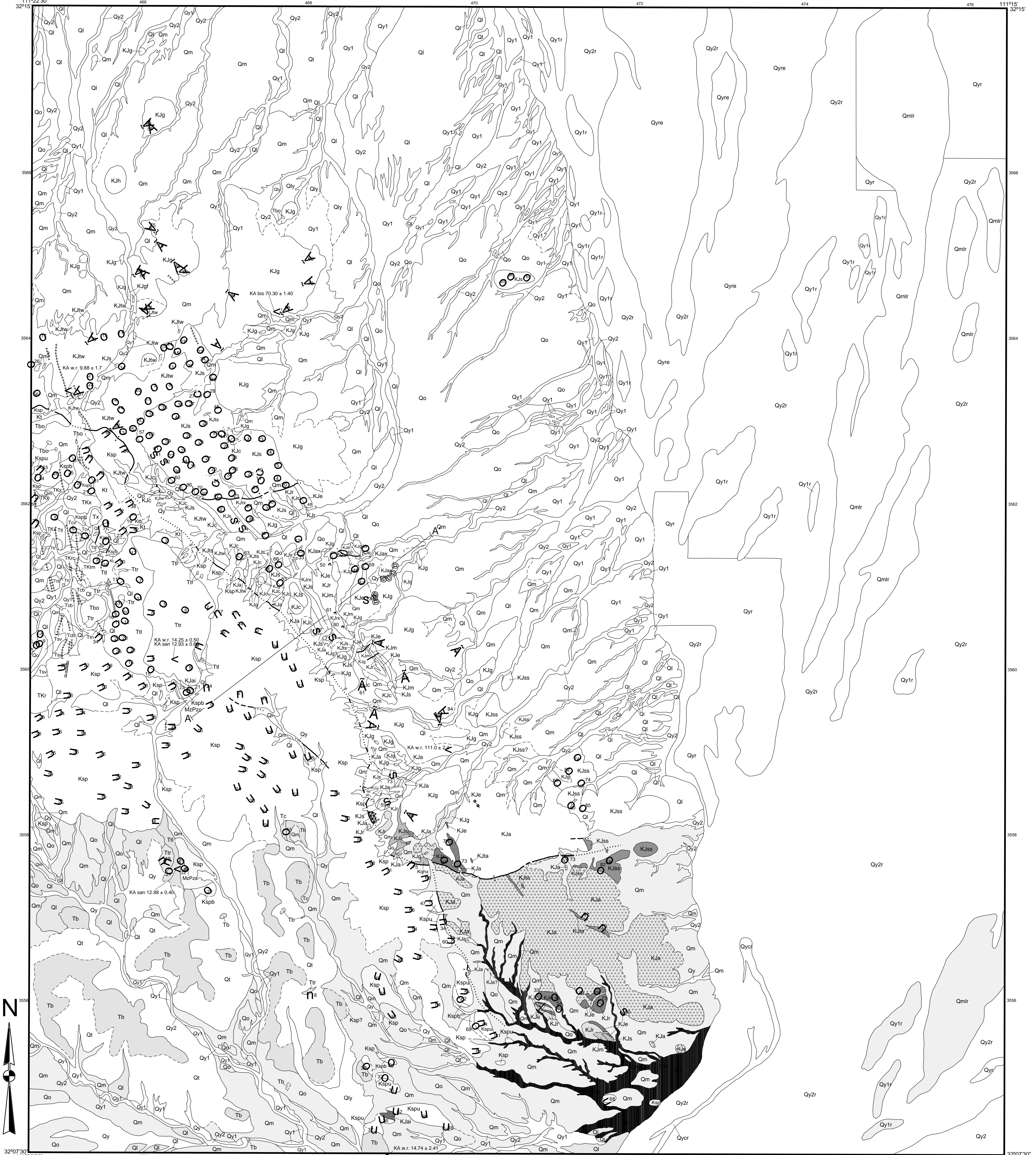
Not to be reproduced for commercial purposes.

citation for this map:

Skotnicki, S.J. and Pearthree, P.A., 2000, Geologic map of the Cocoraque Butte 7.5' quadrangle, Pima County, Arizona: Tucson, Arizona Geological Survey Digital Geologic Map 6 (DGM-06), 1 Adobe PDF file (1 plate), layout scale 1:24,000.

Research supported by the Arizona Geological Survey and U.S. Geological Survey, National Cooperative Geologic Mapping Program, under USGS award #99HQAG0171. The view and conclusions contained in this document are those of the authors and should not be interpreted as necessarily representing the official policies, either expressed or implied, of the U.S. Government.

Arizona Geological Survey
 Digital Geologic Map 6, Plate 1 of 1



Topographic base from U.S. Geological Survey Coconaraque Butte 7.5' quadrangle, 1979

Arizona Geological Survey
 Digital Geologic Map 6, Plate 1 of 1

