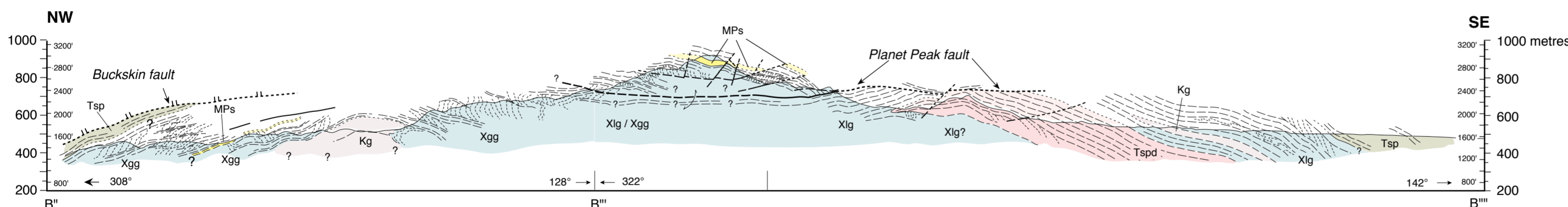
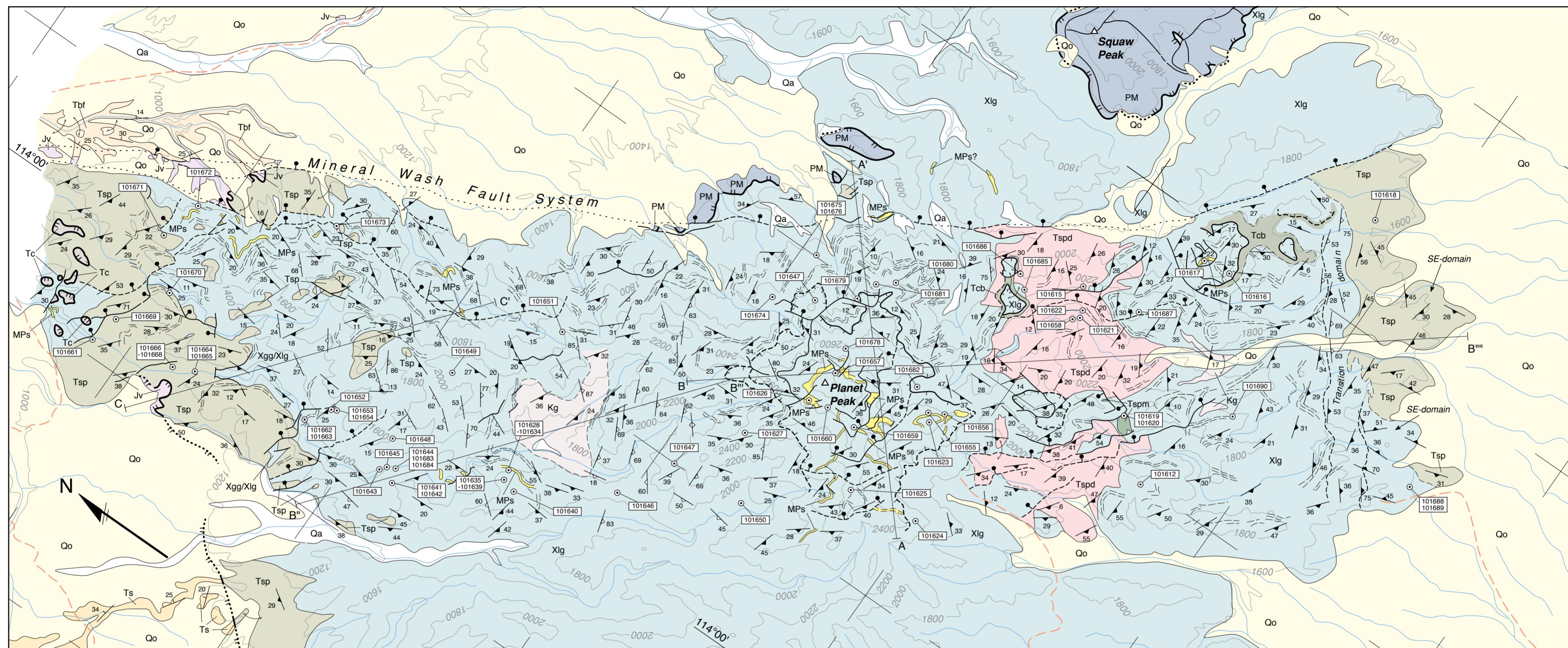
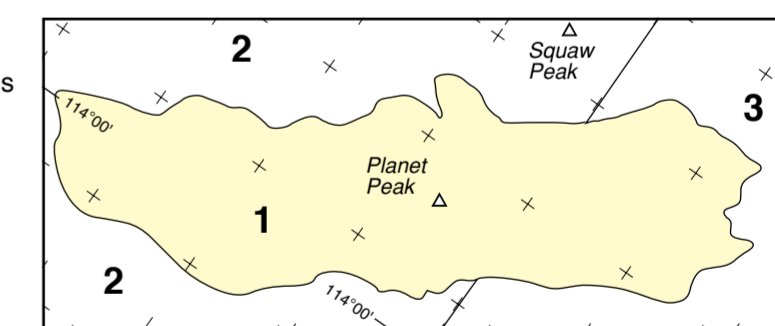


SIMPLIFIED GEOLOGICAL MAP OF THE PLANET PEAK AREA



SOURCES OF DATA:



- 1 This study (Plate 10)
- 2 Spencer, J. E., Reynolds, S. J. and Lehman, N. E., 1989, Geologic map of the Planet-Mineral Hill area, north western Buckskin Mountains, west-central Arizona, in Spencer, J. E. and Reynolds, S. J., eds., *Geology and mineral resources of the Buckskin and Rawhide Mountains, west-central Arizona: Arizona Geological Survey Bulletin, v. 198, Plate 2, scale 1:24000.*
- 3 Bryant, B., 1992, Preliminary geologic map of the Alamo Lake 30' x 60' quadrangle, west-central Arizona: U.S. Geological Survey Open File Report 92-311, 27 p.

MAP UNITS

Post-detachment		Lower plate	
Qa	Recent alluvium	Tcb	Miocene chloritic breccia
Qo	Older Quarternary alluvium	Tspm	Oligo-Miocene hornblendite
Tbf	Late Miocene basin fill	Tspd	Oligo-Miocene diorite
Upper plate		Tsp	Oligo-Miocene Swansea Plutonic Suite
Ts	Miocene sandstone	Kg	Cretaceous Granite
Jv	Jurassic Planet Volcanics	MPs	Mesozoic-Palaeozoic metasedimentary rocks
PM	Palaeozoic-Mesozoic (undiff.)	Xgg	Proterozoic granitic gneiss
Tc	Miocene Hydrothermal carbonate	Xlg	Proterozoic layered gneiss

LEGEND

	dip of bedding		formlines, gneissic foliation
	dip of mylonitic foliation		formlines, mylonitic foliation
	dip of gneissic foliation		unit boundaries, dashed where interpreted, dotted under cover
	gneissic foliation (vertical dip)		normal fault, dashed where interpreted, dotted under cover
	sample location		Planet Peak fault
			Buckskin detachment fault
			tracks
			washes
			cross-section location (see Plate 11)

TITLE: SIMPLIFIED GEOLOGICAL MAP OF THE PLANET PEAK AREA

LOCATION: Buckskin Mountains, La Paz County, Arizona

SCALE: 1:20000 **CONTOUR INTERVAL:** 200 feet

MAPPING: R. J. Scott (1992)

DRAFTED: R. J. Scott, B. E. Isles, D. Gelt