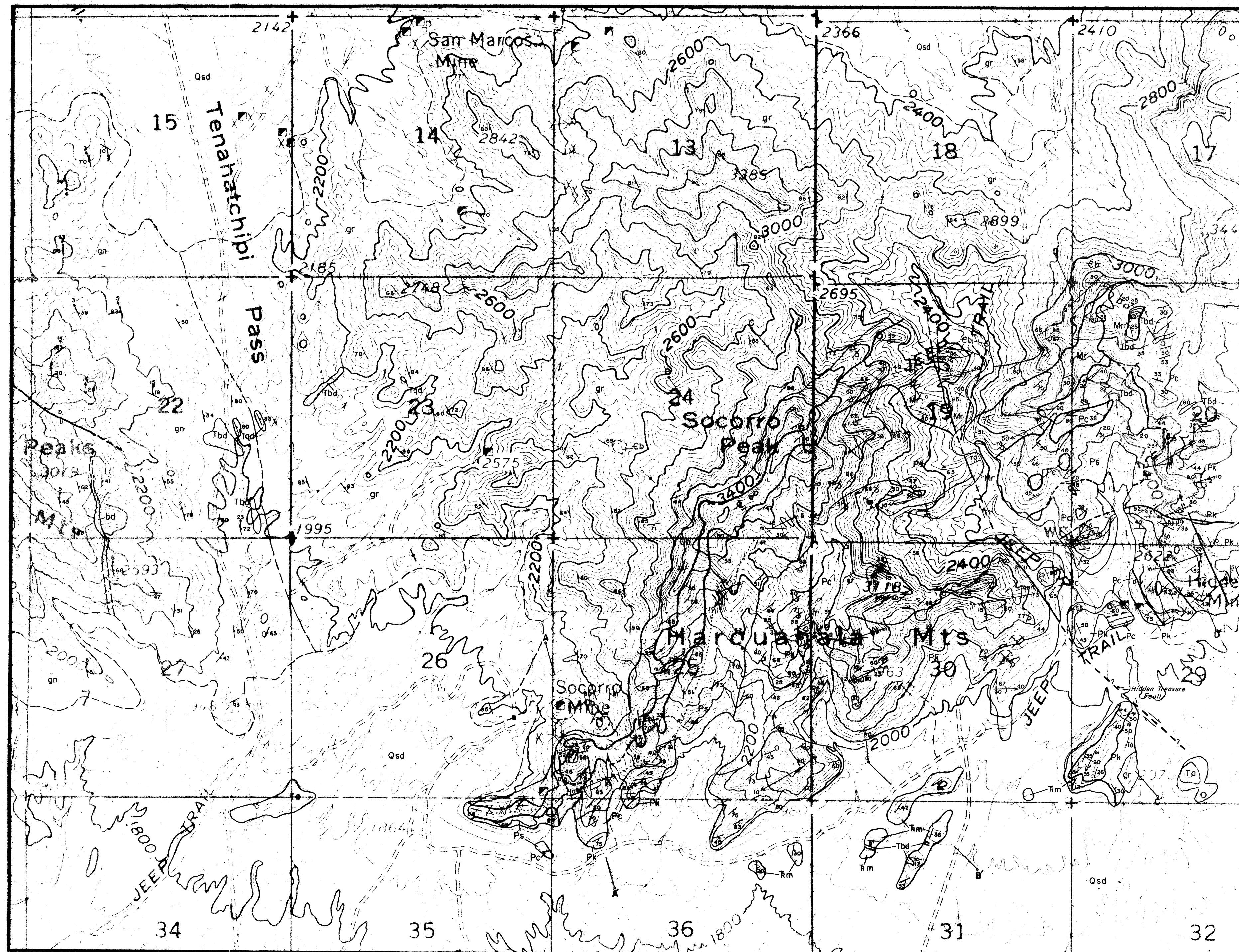
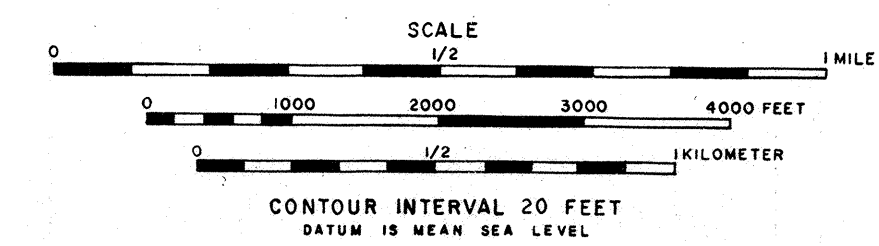


FIGURE 3

GEOLOGIC MAP AND SECTIONS OF A PORTION OF THE WESTERN HARQUAHALA MOUNTAINS ARIZONA



EXPLANATION

Qsd	Alluvium	QUATERNARY	
Ta	Rhyolite		
Dd	Diabase Dike	TERTIARY	
Qd	Quartz Dike		
gr	Socorro Granite	MESOZOIC	
gn	Gneiss		
Triassic	Tm		Moenkopi Formation(?)
Permian	Pk		Kaibab Limestone
	Pc		Coconino Sandstone
Pennsylvanian	Ps		Supai Formation
Mississippian	Mr	Redwall Limestone	
	Cambrion	Cb	Boise Quartzite

