

Geologic map of the Stockton Hill 7 ½' Quadrangle, Mohave County, Arizona

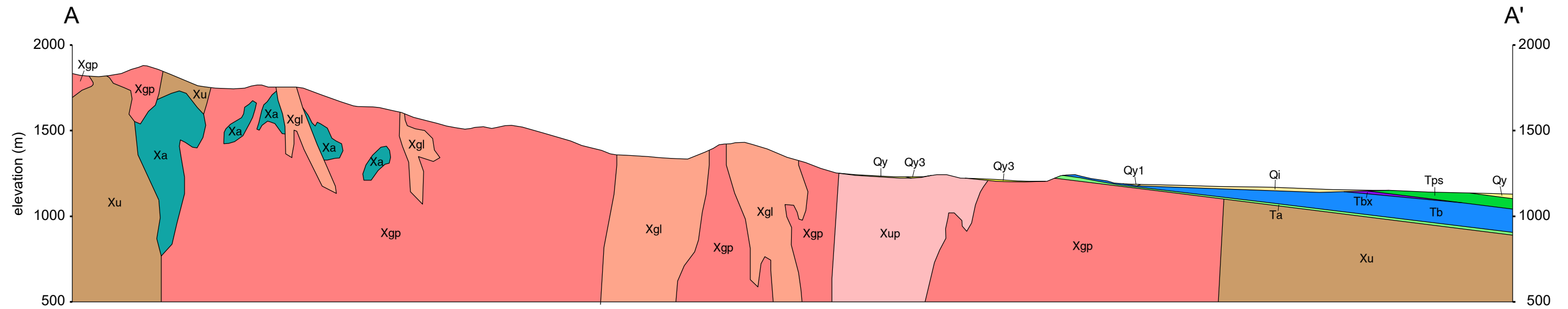
Plate 2 of 2

Bradford J. Johnson, Philip A. Pearthree,
Carson A. Richardson, and Charles A. Ferguson

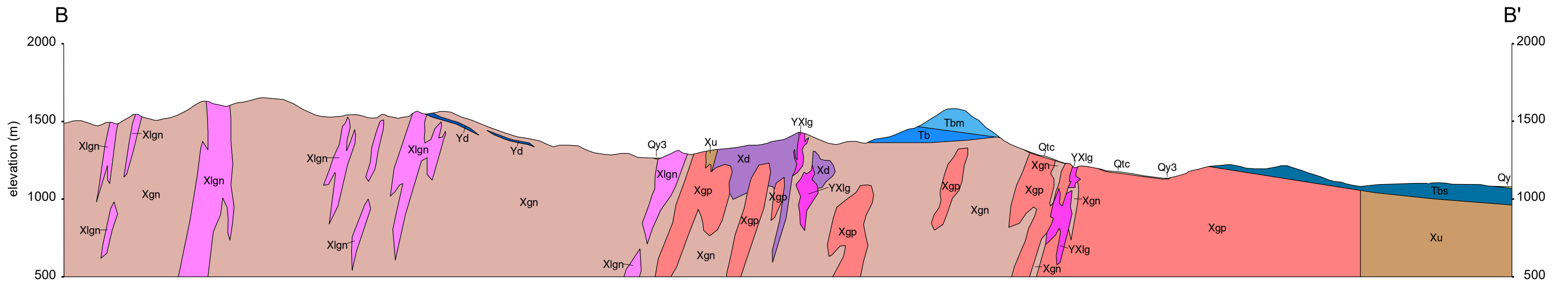
Arizona Geological Survey

Digital Geologic Map 152 (DGM-152)

January 2022



Scale 1:24,000



Scale 1:24,000